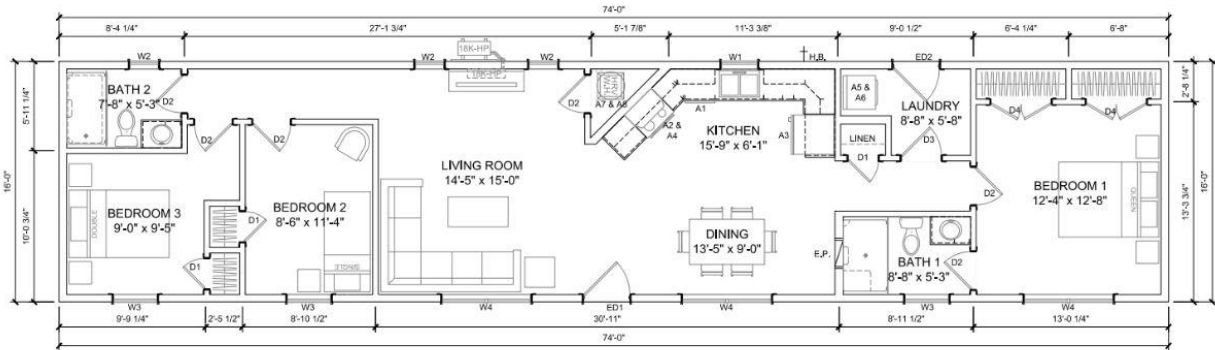
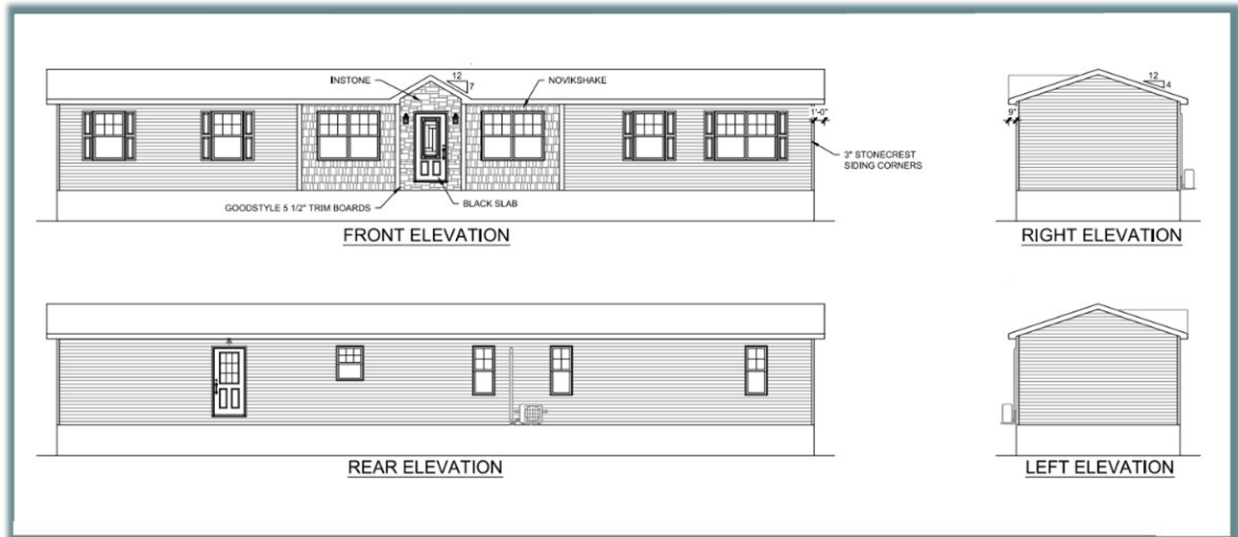




# Custom Supreme 16x74

This Custom Supreme Home features three bedrooms and two full bathrooms. The large kitchen and dining area are perfect for those family get-togethers. The living room is bright and spacious. The home is well insulated and comes with an 18,000 BTU Samsung heat pump for efficient heating and cooling. A back-door mudroom area completes this wonderful package.

We will deliver the home, set it up (block, tie down and skirted), install the heat pump, build you front steps, plumb your septic pipe into the pad, hook up the power and we'll even help you with the building permit.





Lovely curb appeal



Attractive exterior finishes



Large, bright kitchen area



Samsung 18,000 BTU Heat Pump



Ample cabinet space



Modern stainless sink



En Suite shower  
with seat



Contemporary  
style front door



Mudroom &  
laundry area

