

Municipality of the District of Chester

WASTE COLLECTION CALENDAR



2023

INDEX

Bag limits	pg 12
Bag sizes.....	pg 6
Broken glass.....	pg 29
Bulky items.....	pg 12
Clear bag information.....	pg 6, 10
Collection map/routes	pg 16 - 18
Compostable bags	pg 5, 8, 11, 21, 25
FAQs.....	pg 25
Hours of operation	pg 4, 32
Household Hazardous Waste.....	pg 28
Illegal dumping.....	pg 15, 26
Kaizer Meadow.....	pg 4, 32
Landfill fires.....	pg 24
Paper bags for compost.....	pg 5, 7, 21, 23
Plastic Bag Ban.....	pg 14
R6RECYCLES App.....	pg 30
Sorting guide.....	pg 10
Winter waste collection.....	pg 7, 9

Special Leaf Collection will take place between November 13 & 24

Please see page 27 for details.



Special leaf collection takes place this week



Waste collection cancelled



Alternate collection day

**LOOK FOR THESE
SYMBOLS
THROUGHOUT THE
CALENDAR!**

Message from the Warden

The Municipality continues to invest in the necessary infrastructure to ensure that Kaizer Meadow Landfill is a leader in environmentally sound waste management.

This year, we are constructing a new cell to meet our capacity needs as well as purchasing a new compactor that will improve our compaction rate.

We are in the process of developing a new leachate treatment system, which will improve our ability to manage the leachate we create in an environmentally sound manner.

We continue to work towards increasing the volume of waste that can be diverted and repurposed. We appreciate the continued support of our residents in helping us to achieve our goals of providing leadership in waste management practices and environmental sustainability.

Thanks.

Members of Council
(left to right, back to front)

Municipal Solicitor - Sam Lamey;

District 1 - Councillor Andre Veinotte;

District 2 - Councillor Floyd Shatford;

District 5 - Councillor Abdella Assaff;

District 3 - Councillor Derek Wells;

CAO - Dan McDougall;

District 7 - Councillor Sharon Church;

District 4 - Warden Allen Webber;

District 6 - Councillor Tina Connors

Municipality of the District of Chester,
P O Box 369, Chester NS B0J 1J0

Phone: 902-275-3554

Fax: 902-275-4771

Email: administration@chester.ca



December 2022

Questions? Call 902-275-2330

IMPORTANT INFORMATION REGARDING BOXING DAY AT KAIZER MEADOW

Kaizer Meadow will be closed on **BOXING DAY** but collection will take place as usual.



SORTING WASTE OVER THE HOLIDAYS

RECYCLABLES	PAPER	ORGANICS	GARBAGE
Plastic packaging	Regular wrapping paper	Waxed paper	Foiled wrapping paper
Clear plastic wrap	Gift bags	Tissue paper	Bows & ribbon
Tin cookie/candy containers	Christmas cards & envelopes	Christmas cookies & candy	Christmas lights
Bubble/shrink wrap	Cardboard & boxboard	Turkey drippings, bones, etc.	Christmas wreaths (with metal framework)

TAKING DOWN THE CHRISTMAS TREE?

No problem! Place it out on your next waste collection day and it will be collected as your bulky item!



Sun	Mon	Tue	Wed	Thu	Fri	Sat
WEEK A				1	2	3
WEEK B				4	5	6
7	8	9	10	11	12	13
14	15	16	17	18	19	20
21	22	23	24	25	26	27
28	29	30	31	WEEK A		
CHRISTMAS DAY				BOXING DAY SITE CLOSED COLLECTION AS USUAL		

DUE TO SCHEDULE CHANGES, KAIZER MEADOW WILL BE CLOSING AT NOON ON DECEMBER 24 & DECEMBER 31, 2022.

The Municipality of Chester would like to wish everyone a very happy holiday season!



BROKEN CHRISTMAS BULBS?

No problem! **ALL** broken glass **NEEDS** to be placed in a sealed box and labeled "**BROKEN GLASS**". Place the box alongside your other waste on your collection day.





KaizerMeadow

Environmental Management Centre

Hours of Operation
Monday - Saturday - 8 a.m. - 4 p.m.
Sunday - Closed
902-275-2330
www.chester.ca

The Kaizer Meadow Environmental Management Centre is comprised of a waste management facility that actually improves the environment and an Eco-Park for green businesses. We are located at 450 Kaizer Meadow Road, Route 14, approximately 17 km North from Exit 8, Highway #103. Look for the sign!



Welcome to the Kaizer Meadow Wind Turbine Campsite! We now offer visitors the opportunity to rest, visit or stay overnight in this unique setting. The area can accommodate five or six tents, has a fire pit, washroom facilities and more!

REMINDERS ABOUT KAIZER MEADOW:

- Kaizer Meadow **DOES NOT** accept asbestos waste
- Personal Protective Equipment (PPE) is **REQUIRED** beyond the Public Drop-off area



Kaizer Meadow originally opened in 1993. At that time, there were approximately 100 dumpsites in NS. Today, there are only seven Second Generation Landfills in NS.



Kaizer Meadow is also the home of a 98 metre tall, 2 MW wind turbine which produces enough electricity for approximately 500 homes. The cost? \$5.5 million!



Half cells are constructed at a cost of approximately \$3-5 million dollars each. Construction on Kaizer Meadow's landfill cell "4A" was completed in September 2017.



Questions? Call 902-275-2330 or email solidwaste@chester.ca

January 2023

COMPOSTABLE BAGS & PAPER DRINK CUPS

For the past few years, we have been urging residents that if you use the compostable bags in your mini bins and/or green carts, use up what you have and switch to paper or boxboard liners. As well, we have been urging that paper drink cups be placed in the garbage instead of the green cart.

These items cause many operational issues at the facility that processes our organic waste. For this reason, as of **JUNE 1, 2023**, we will **NO LONGER** be accepting plastic-like compostable bags and hot/cold drink cups in the green carts. If you have not made the switch after **JUNE 1, 2023**, your cart could be **REJECTED**.

For more information, see **PAGE 8** or email Shabby at solidwaste@chester.ca.



www.chester.ca

Sun	Mon	Tue	Wed	Thu	Fri	Sat
1  WEEK B	2	3	4	5	6	7
8 WEEK A	9	10	11	12	13	14
15 WEEK B	16	17	18	19	20	21
22 WEEK A	23	24	25	26	27	28
29 WEEK B	30	31	HAVE WASTE CURBSIDE FOR 7 A.M.			

7 A.M. — BE THERE OR BE LATE!

7 A.M. is when the waste collector starts collecting your waste. Although the collector tries to maintain pick up times, sometimes this is not possible. New drivers, road conditions & breakdowns may alter collection times. Please do not get accustomed to placing your waste out later than 7 A.M. If waste is placed out late, trucks **WILL NOT** return to collect it.

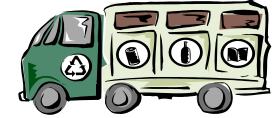


WASTE COLLECTION

A few tips and guidelines to remember about waste collection:

COLLECTION OF WASTE

ALL WASTE must be within 10 feet of the curb or it will not be collected.



ALWAYS place your waste at the end of your own driveway and **NOT** across the street.

WASTE IS COLLECTED EVERY TWO WEEKS, on your scheduled collection day. On your collection day, garbage, blue bag recyclables, recyclable paper, green cart and **ONE** bulky item will be collected. Questions? See **PAGE 18** or call Kaizer Meadow.



THE START TIME for waste collection is **7 A.M.** Please be sure to have your waste curbside for **7 A.M.** Breakdowns, weather, new drivers and route changes may affect when your waste is collected. Having your waste curbside by **7 A.M.** ensures you won't be missed. Trucks **WILL NOT** return to collect waste that was put out late.

DO NOT place your waste with your neighbour's waste unless both civic addresses are posted. If the waste collectors only see one civic number posted, they will only collect the allowable bag limit and will reject the rest.

BAGS, BAGS & MORE BAGS

INDUSTRIAL SIZED BAGS (larger than 31' x 42") **CANNOT** be collected at the curb. First, they are too heavy for one person to lift into the hopper of the truck, which is 3 feet from the ground. Second, these bags are too big to fit into the hopper of some of the collection trucks. Please do not use them.



ONLY ONE black bag will be collected per collection. Any more than that will be rejected.

WASTE THAT IS PLACED in garbage cans/containers **MUST BE** bagged. Loose waste will not be collected.

THE CLEAR BAGS FOR GARBAGE PROGRAM is not just for curbside collection. The **SAME** clear bag rules apply when delivering waste to Kaizer Meadow **AND** when bagging up waste for bulky item collection (see **PAGE 12** for details). Using clear bags encourages people to recycle and compost, and it also makes it safer for the people who handle your waste.

BLACK BAGS are subject to inspection. These bags are not meant to conceal unsorted waste. The bag is meant for any type of garbage, including "personal" garbage, that you do not want your neighbour to see.

THIS & THAT

IF YOU HAVE OR USE a waste collection box, be sure it's free of loose debris. The collector is not responsible for picking up loose waste. Also, if you share a box with other neighbours, remember that only **ONE** black bag is permitted per household. Civic numbers need to be posted so that the collector knows how many bags to collect.

February 2023

IMPORTANT INFORMATION REGARDING THE NS HERITAGE DAY WASTE COLLECTION

This year, if your collection day falls on the **HERITAGE DAY** (Feb. 20), please place your waste out for collection on **SATURDAY, FEBRUARY 18.**

PLEASE CHECK THE CALENDAR AND LOOK FOR THE ICONS TO SEE WHEN YOUR COLLECTION DAY WILL BE.






IS YOUR WASTE ACCESSIBLE? IS YOUR PRIVATE ROAD PASSABLE?

Do you have a collection box that you use for your waste? Do you know that it needs to be accessible in order for you to receive waste collection? Please be sure that your box or collection area is clear of snow so that your collection service isn't interrupted.

Also, if you live on a private road, plow & salt/sand it **BEFORE** collection. If your road is not plowed, the collection truck may not collect your waste.



Questions? Call 902-275-2330

Sun	Mon	Tue	Wed	Thu	Fri	Sat
WEEK B	HAVE WASTE CURBSIDE FOR 7 A.M.		1	2 	3	4
5 WEEK A	6	7	8	9	10	11
12 WEEK B	13 	14	15	16	17	18  ALTERNATE COLLECTION
19 WEEK A	20 NOVA SCOTIA HERITAGE DAY NO COLLECTION SITE CLOSED	21	22	23	24	25
26 WEEK B	27	28	SEE PAGES 16 —18 TO FIND OUT YOUR COLLECTION DAY			

COLLECTION OF GREEN CARTS IN THE WINTER

Having issues with your cart freezing during the winter months? Be sure to place your cart out for collection every two weeks, even if it isn't full. Straining material and using **PAPER BAGS** will also help.



IMPORTANT PROGRAM CHANGES AS OF JUNE 1, 2023!

COMPOSTABLE BAGS & COFFEE/ PAPER CUP CONTAMINATION

A few years ago, our organics processor, the Lunenburg Regional Community Recycling Centre (LRCRC), asked us to support the use of paper-based liners in green carts and to urge residents and businesses to place hot/cold drink cups into the garbage instead of into the organics stream.

Often used plastic-like bags and cups have a negative effect on the processing of organic material. When the bags and cups make their way into the curing (aging, maturing) stage, they do not breakdown quickly and tend to get stuck in the grinding equipment used during processing. As a result, we asked our residents and businesses to voluntarily switch to a paper liner and place cups in the garbage.

As of **JUNE 1, 2023**, we will no longer accept plastic – like compostable bags and hot/cold paper drink cups in green carts. If you have already made the switch, thank you for supporting this change! If you have not, expect to see a reminder sticker on your green cart over the next several months. Please make the switch to avoid possible rejection of your green cart after **JUNE 1!**

If you have any questions about processing or the program change, please contact LRCRC at 902-543-2991. If you have other questions, please contact Kaizer Meadow at 902-275-2330 or email us at solidwaste@chester.ca.



Compostable bags and paper cups stuck in the grinding equipment at the LRCRC.

Compostable bags do not fully breakdown in the organics processing system...



...causing widespread contamination and equipment breakdowns at the Lunenburg Regional Community Recycling Centre.



Even after a year, bags and cups are still visible in the compost pile.



Paper bags or paper-based liners are always the preferred option. Paper breaks down 100% and most of these items can be found in your home (cereal boxes, newspaper, etc.)!

March 2023

WINTER WASTE COLLECTION DELAYS

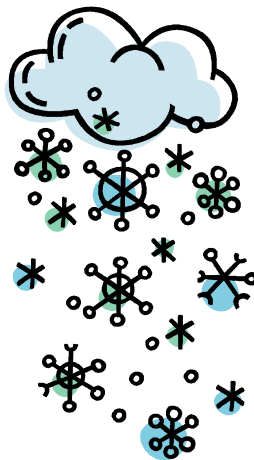
During the winter months, slippery roads are a given. Slippery roads equal delays. When we have inclement weather, waste collection trucks may not show up at the time you are accustomed to. Play it safe and always have your waste out for **7 A.M.**



WASTE COLLECTION IN THE WINTER

In case of a snowstorm, listen to CKBW or call Kaizer Meadow at 902-275-2330 in the event that waste collection has been cancelled.

If cancelled, collection will be held the Saturday immediately following your regular collection. Be sure to remove materials from the roadside as soon as possible to avoid the snow plow.



www.chester.ca



Sun	Mon	Tue	Wed	Thu	Fri	Sat
WEEK B			1	2	3	4
HAVE WASTE CURBSIDE FOR 7 A.M.						
5 WEEK A	6	7	8	9	10	11
12 WEEK B	13	14	15	16	17 	18
19 WEEK A	20	21	22	23	24	25
26 WEEK B	27	28	29	30	31	

HOW SPRING WEIGHT RESTRICTIONS AFFECT YOUR ROAD

If your road is affected by the spring weight restrictions imposed by the Department of Public Works, a smaller truck is used for waste collection. Garbage bags, blue/clear bags, paper, cardboard and green carts **CAN BE COLLECTED AS USUAL**. Green cart material needs to be bagged. Visit <https://novascotia.ca/tran/trucking/springweight.asp> for road updates.



THE MUNICIPALITY OF CHESTER'S FOUR STREAM SORTING GUIDE

RECYCLABLES (BLUE BAG)	RECYCLABLE PAPER (CLEAR BAG)	ORGANICS (GREEN CART)	GARBAGE (CLEAR BAG)
<ul style="list-style-type: none"> • Plastic containers, tubs, lids & bottles (shampoo, yogurt, detergent, cookie trays, cleaning fluid bottles, etc.) • Plastic bags (grocery, bread, shopping, frozen food, Ziploc® bags, etc.) • Aluminum foil, cans, pie plates & trays • Tin & steel cans • Metal lids & tops (place in can & crimp shut) • Glass bottles & jars (baby food, pickle, Mason jars, pasta, etc.) • Milk containers • Paper cartons (juice, sauerkraut, etc.) • Refundable beverage containers (pop cans, bottles, juice packs, liquor bottles, etc.) • Plastic fruit & vegetable trays 	<ul style="list-style-type: none"> • Newspaper & flyers • Magazines • Catalogues & phone books • Soft covered books • Hard covered books (remove cover & place in same bag) • Junk mail • Office paper • Envelopes (plastic windows do not have to be removed) • Egg cartons & paper trays • Writing paper • Note pad & copier paper • Shredded paper • Boxboard (paper towel & toilet paper rolls, cereal & detergent boxes, frozen food boxes, Kleenex & shoe boxes) • File folders • Greeting cards 	<ul style="list-style-type: none"> • All food waste (peelings, bones, dairy, seafood shells, etc.) • Coffee grounds, filters & tea bags • Pizza boxes • Paper towels & napkins • Wet or soiled paper or boxboard • Waxed paper/cardboard • Paper dishes • Sugar, flour & potato bags (paper) • Wooden stir sticks • Tissue paper • Leaves & grass • Sawdust & wood shavings (douse with water before collection to avoid a blowing hazard) • Twigs & branches, small brush 	<ul style="list-style-type: none"> • ALL Styrofoam™ • Candy wrappers & chip bags • Cigarette butts • Clothing & foot wear • Disposable diapers • Feminine products • Kitty litter & dog waste • Vacuum bags & floor sweepings • Toothpaste tubes • Frozen juice cans • Dryer sheets & lint • Popcorn bags • Soiled/dirty plastic wrap • Soiled/dirty aluminum foil • Incandescent light bulbs • Broken glass (place in box and label "BROKEN GLASS") • Kleenex® • Paper drink cups (see pg. 8 for details)
<p>Beverage containers (excluding milk cartons) can also be returned to an ENVIRO-DEPOT™ for a refund.</p> <div data-bbox="159 1279 558 1370"> <p>RECYCLABLES MUST BE CLEAN OR THEY WILL BE REJECTED!</p> </div> <div data-bbox="159 1386 558 1523"> <p>RECYCLABLE CONTAINERS & RECYCLABLE PAPER DO NOT BELONG IN THE SAME BAG.</p> </div>	<p>Corrugated cardboard (flatten boxes & tie in 2' x 2' x 3' bundles & place next to other bags of recyclable paper).</p> 	<p>DO NOT place branches more than 2" in diameter in the cart or that they stick out over the top of the green cart. The lid must be able to close.</p> <p>TIE branches in 3' long bundles and place them out beside your cart.</p> <p>If your cart is full, put a MAXIMUM of 3 paper bags of leaves out per collection.</p> <p>NO PLASTIC OR THE CART WILL BE REJECTED!</p>	<div data-bbox="1528 1192 1955 1516"> <p>HOUSEHOLD HAZARDOUS WASTE must be taken directly to Kaizer Meadow in a labeled container that WILL NOT leak. See page 28 or more details on hazardous waste.</p>  </div>

April 2023

IMPORTANT INFORMATION REGARDING GOOD FRIDAY WASTE COLLECTION

This year, if your collection day falls on **GOOD FRIDAY** (April 7), please place your waste out for collection on **SATURDAY, APRIL 8.**

**PLEASE CHECK THE CALENDAR AND
LOOK FOR THE ICONS TO SEE
WHEN YOUR
COLLECTION DAY WILL BE.**



#FACTS

'COMPOSTABLE'
PLASTIC DOES NOT
DEGRADE

Plastic-like compostable
bags do not break down
during the municipal
composting process.

Please use paper

902-275-2330 | phone
solidwaste@chester.ca | email
www.chester.ca/waste-recycling

CARDBOARD

Be sure that your cardboard is flattened and tied into 2' x 2' x 3' bundles. Unbundled cardboard may not fit into the hopper of the truck and may be **REJECTED.**



Questions? Call 902-275-2330

Sun	Mon	Tue	Wed	Thu	Fri	Sat
SEE PAGES 16 –18 FOR YOUR COLLECTION DAY						1
2 WEEK A	3	4	5	6	7 GOOD FRIDAY NO COLLECTION SITE CLOSED	8 ALTERNATE COLLECTION
9 WEEK B	10 Easter Monday Site Open Collection as usual	11	12	13	14	15
16 WEEK A	17	18	19	20	21	22
23 WEEK B	24	25	26	27	28	29
30 WEEK A						

SAFE SHARPS BRING BACK PROGRAM

Needles, syringes and lancets **NEVER** belong in the garbage, recycling bags or green cart. They can seriously injure and cause unnecessary stress to staff. Ask your pharmacist for a **FREE** Safe Sharps container and then return the full container to the pharmacy for **FREE** and **PROPER** disposal.



BULKY ITEM COLLECTION

Businesses and residents can place **ONE** bulky item alongside regular waste on collection day. Below is an outline of what is acceptable and not acceptable as a bulky item. If you are still unsure, please call Kaizer Meadow at 902-275-2330. Remember: **WHEN IN DOUBT, FIND OUT!**

What classifies as a bulky item? A bulky item can be a chair, a sofa, a mattress, a washer, or a wooden pallet. It can also be **ONE** extra clear bag of garbage.

ACCEPTABLE ITEMS

- **ONE** large appliance - stoves, dishwashers, hot water tanks, etc.
- Metals - small car parts, lawn mowers (fluids **MUST** be removed), etc.
- **ONE** piece of furniture or mattress.
- Lobster traps - **LIMIT** of **ONE** trap per residence; any more than this will not be collected.
- **ONE BUNDLE** of wood - wood cannot exceed 4 feet in length & 50 lbs in weight; small pieces must be bundled, boxed or bagged.
- **ONE BUNDLE** of drywall - drywall cannot exceed 4 feet in length & 50 lbs in weight; small pieces must be bundled, boxed or bagged.
- **ONE BUNDLE** of asphalt shingles - asphalt shingles cannot exceed 50 lbs in weight; small pieces must be bundled, boxed or bagged.

NON-ACCEPTABLE ITEMS

- Electronics - see page 20 for a detailed list. These items will **NOT** be collected.
- Tires - take to Kaizer Meadow. Retailers can also take up to 4 tires at a time, free of charge.
- HHW - paints, oils, fuels, pesticides, etc. must be taken to Kaizer Meadow's HHW Depot. See page 28 for a detailed list.
- Propane tanks - can be taken to Kaizer Meadow.
- Items containing Freon® - refrigerators, freezers, dehumidifiers & air conditioners must be taken to Kaizer Meadow.
- Bags larger than 31" x 42" will not be collected.
- **MULTIPLE BLACK BAGS** will not be collected (only one black bag will be collected per civic address).

BAG LIMITS

- 6 bags of garbage (1 black bag permitted)
- 10 bags of recyclables/paper/cardboard
- 1 green cart
- 1 bulky item

More Guidelines...

- **DO NOT** place anything that you wish to keep near the curb or near your waste collection box on collection day. The waste collector may mistake the item as a bulky item.
- **IF YOU CAN'T SEE IT, NEITHER CAN THE COLLECTOR.** Do not bury blue bags or recyclable paper beneath or behind your bulky item. The driver will not rummage through to look for these items. Please keep them separate and visible, or they may be missed.
- **IMPORTANT:** If you choose to have an extra bag of garbage instead of a larger item, this is acceptable. Just be sure you only have **ONE** black bag at the curb. Over the limit black bags will still be **REJECTED**.

May 2023

GOING...GOING...GONE

Sometimes, mistakes happen. And sometimes, these mistakes can cost someone a valuable item. Unfortunately, these mistakes can happen during waste collection. Sometimes, items that aren't actually meant to be collected curbside get picked up with other waste, especially with our bulky item program. Items that are placed near or with garbage, recyclables and paper will normally be collected and tossed onto the collection truck.

The solution? **DO NOT** place anything that you wish to keep near the curb or near your waste collection box on collection day.

The collector may mistake the item as a bulky item.



DEAR SHABBY?

Questions about bulky item collection? Or not sure if your item qualifies as a bulky item? No problem! Email "Dear Shabby" at solidwaste@chester.ca to have **ALL** of your waste-related questions answered!

www.chester.ca

Sun	Mon	Tue	Wed	Thu	Fri	Sat
WEEK A	1	2	3	4	5	6
7 WEEK B	8	9	10	11	12	13
14 WEEK A Mother's Day	15	16	17	18	19	20
21 WEEK B	22 Victoria Day Site Open Collection as usual	23	24	25	26	27
28 WEEK A	29	30	31	HAVE WASTE CURBSIDE FOR 7 A.M.		

GET THE CORRECT INFORMATION

So many times we hear the phrase, "Somebody told me..." or "I heard that...". Sometimes, that "somebody" is wrong. To get the correct information on waste and recycling, please call Kaizer Meadow at 902-275-2330 or email "Dear Shabby" at solidwaste@chester.ca. Shabby and staff will gladly give you the **CORRECT** information!



INFORMATION REGARDING USED OIL AND ANTIFREEZE CONTAINERS

In September 2019, the Province of Nova Scotia introduced a new regulation for safe disposal and recycling of used oil and glycol (antifreeze) products. The Used Oil Management Association Atlantic (UOMA) is managing this program.

What does this mean? Residents can bring their used items to the Household Hazardous Waste Depot at Kaizer Meadow for recycling. UOMA Atlantic will then collect these used containers from Kaizer Meadow for proper recycling through their program. These items include:

- used oil containers (50 litres or less)
- used antifreeze containers (50 litres or less)
- oil filters
- diesel exhaust fluid containers (50 litres or less)
- lubricating aerosols
- automotive parts cleaner

On March 1, 2020, used oil and glycol products and containers were **BANNED** from disposal in landfills.

For more information about UOMA Atlantic, this program and alternative drop off sites for these materials, please visit their website at www.uoma-atlantic.com.



PLASTIC BAG BAN



As of October 30, 2020, a provincial plastic bag ban was implemented affecting grocery stores, restaurants, convenience stores, department stores, etc.

What does this ban mean? It means these businesses are no longer permitted to offer plastic bags at their checkouts. They can however, offer paper or reusable bags to their customers.

The Plastic Bag Ban is intended to reduce waste by cutting back the amount of plastic used by consumers. Did you know that it is estimated that the average Nova Scotian used approximately 450 shopping bags per year?!

With this ban, there are exemptions. Plastic bags are permitted for:

- Packaging loose bulk items such as fruit, vegetables, nuts, grains or candy
- Packaging loose small hardware items such as nuts, bolts and nails
- Containing or wrapping frozen foods, meat, poultry or fish, whether pre-packaged or not
- Wrapping flowers or potted plants
- Protecting prepared foods or bakery goods that are not pre-packaged



For a full list of exemptions and more information on this provincial ban, please visit <https://novascotia.ca/single-use-plastic-bag-ban/>.

June 2023

NEED COMPOST?

Kaizer Meadow has a limited supply of compost that is usually ready to harvest in late spring.

Please call
902-275-2330 or
email

solidwaste@chester.ca for
availability.



COTTAGE WASTE

Just like at home, cottage waste **MUST** be properly sorted. Most times, cottage roads do not have access to curbside collection. Most will have a waste collection area at the beginning of their road. This area is meant for the residents of that road only.

If someone dumps waste at these areas and is not permitted to, that waste is considered illegally dumped and is in contravention of our Solid Waste By-Law.



Photo: T. Harnish

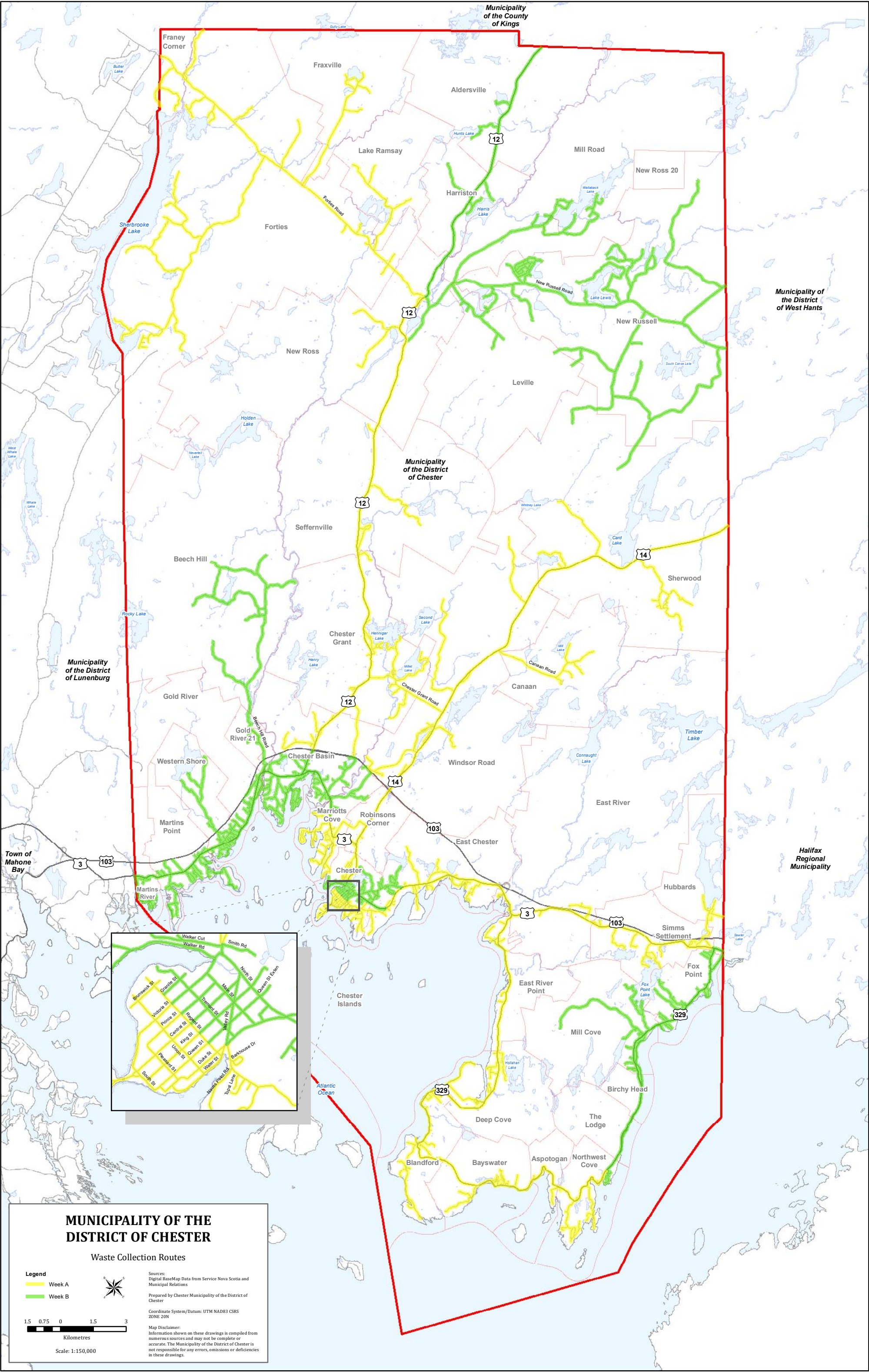
Questions? Call 902-275-2330

Sun	Mon	Tue	Wed	Thu	Fri	Sat
WEEK A				1	2	3
SEE PAGES 16 —18 FOR YOUR COLLECTION DAY						
4	5	6	7	8	9	10
WEEK B						
11	12	13	14	15	16	17
WEEK A						
18	19	20	21	22	23	24
WEEK B						
Father's Day						
25	26	27	28	29	30	
WEEK A						

ABUSE AT PUBLIC WASTE STATIONS

Public waste stations are in place throughout the Municipality to deter people from littering. All too often, we will find household waste dumped at these stations. When dumping at a waste station takes place, it is classified as illegally dumped and is in contravention of our Solid Waste By-Law. Please remember that household waste, etc. **SHOULD NOT** be dumped next to a public waste station.





MUNICIPALITY OF THE DISTRICT OF CHESTER

Waste Collection Routes

Legend

Week A

Week B

Kilometres

Scale: 1:150,000

Sources:
Digital BaseMap Data from Service Nova Scotia and
Municipal Relations
Prepared by Chester Municipality of the District of
Chester
Coordinate System/Datum: UTM NAD83 CSRS
ZONE 20N
Map Disclaimer:
Information shown on these drawings is compiled from
numerous sources and may not be complete or
accurate. The Municipality of the District of Chester is
not responsible for any errors, omissions or deficiencies
in these drawings.

WEEKDAY	WEEK A	WEEK B
Monday	Starting at the intersection of Hwy. 3 and Hwy. 329 at East River, including part of Northwest Cove, Aspotogan, Bayswater, Blandford, Upper Blandford, Deep Cove and part of East River , and ending at 2400 Hwy. 329 and including Tilley Point Road.	Starting at the abandoned rail line where it intersects with Hwy. 3 in Hubbards and ending at and including Leeward Point Rd Hwy 329. This includes part of Northwest Cove, The Lodge, Birchy Head, Mill Cove, Fox Point and part of Hubbards to the abandoned rail line where it intersects with Hwy. 3 in Hubbards including Fox Point Front Rd.
Tuesday	<p>Starting at the intersection of Pig Loop Rd. and Valley Rd. turning South onto Duke St. to the intersection of Duke St. and Regent St. including Regent St. and all streets in the Village of Chester lying South of Regent St. including the Peninsula.</p> <p>Starting at the intersection of Haddon Hill Rd. and Hwy. 3 including all of Haddon Hill Rd., all of Robinsons Corner (including Robinsons Corner Rd.) and including part of Marriotts Cove to and including Marriotts Cove Rd East and Marriotts Cove Rd West. Also, including Hwy. 3 to Douglas Avenue.</p> <p>Starting at Pig Loop Rd. and ending at the intersection of Duke St. and Pig Loop Rd. including all of Pig Loop Rd., Zinck Rd., Golf Course Rd., Chandler Rd., and Nauss Point.</p> <p>Starting at the East Chester Recreation Association building on Hwy. 3 and ending at Chester Shore Rd., including Stevens Rd.</p>	<p>This also includes all streets in the Village of Chester lying North of Regent St. including Walker Rd. and Walker Cut.</p> <p>From Chester Shore Rd. to the Old Train Station, excluding Chester Shore Rd.</p> <p>Starting at the East Chester Recreation Association building traveling along Old Trunk 3 to the intersection of Hwy. 3 and Haddon Hill Rd. (next to the Old Train Station). This includes all of Old Trunk 3, Chester Downs, Islandview Subdivision, all of Stanford Lake Rd. (to where it intersects with Hwy. 3), Chester Commons Rd., Maplewood Dr., and Target Hill Rd.</p>
Wednesday	<p>Starting at the intersection of Route 14 and Hwy. 3 to the Landfill including Chester Grant Rd. to Route 12, Wake Up Hill Rd. and all of Route 14.</p> <p>Starting at the intersection at Marriotts Cove Rd. and Hwy 3 ending at Marina Rd., including Marina Rd., Shaw Island, and part of Marriotts Cove.</p>	Starting at Marina Rd. and ending at the old Gold River School (6200 Hwy 3), including part of Marriotts Cove, Middle River, Chester Basin, Croft Rd., Beech Hill Rd., Bridgeview Drive, Gold River Rd. and all other roads along Hwy 3. Also including part of Route 12 where it intersects with Hwy 3 to Hwy 103 (Exit 9 carpool).
Thursday	Starting at Hwy 103 (Exit 9 carpool) along Route 12, including Lacey Mines Rd., Clinton Rd., North Lower Grant Rd., to New Ross where Route 12 intersects with the Forties Rd., including all of the Forties and over to the county line at Franey Corner, including Seffernville, Forties, Lake Ramsay, Glengarry and Fraxville to the intersection of Route 12 and Forties Rd.	<p>Starting at the county line at New Russell over to the junction of Lake Lawson Road, including Lake Lawson Road and also including Mill Rd. and Leville.</p> <p>Starting at the county line in Aaldersville to the intersection of Route 12 and Forties Rd.</p>
Friday	Starting at East Chester Recreation Association building and ending at the abandoned rail line in Hubbards and all roads in between. This includes Simms Settlement, Dauphinee Mill Lake Rd. & Otter Point.	Beginning at the bridge in Martins River and ending at the old Gold River School (6200 Hwy 3) in Gold River. This includes all roads in Martins Point, Western Shore and part of Gold River between the old Gold River School (6200 Hwy 3) and Martins River Bridge.

July 2023

www.chester.ca

IMPORTANT INFORMATION REGARDING CANADA DAY AT KAIZER MEADOW

Kaizer Meadow will be closed on
CANADA DAY (July 1).

INFORMATION ON FLUORESCENT BULBS & CFL DROP-OFF BOXES

Drop off your old fluorescent bulbs
(including compact fluorescent lights) at
one of our drop-off boxes, and the
Municipality will dispose of them at our
Household Hazardous Waste Depot.

Drop-off box locations:

- Hubbards Hardware
- New Ross Home Hardware
- Adams Bottle Exchange

Please remember that incandescent
bulbs, flood lights and LED lights are **NOT**
hazardous and
belong in the
garbage. You can
place them in a
box next to your
garbage and
label **"GLASS"**.



Sun	Mon	Tue	Wed	Thu	Fri	Sat
WEEK A HAVE WASTE CURBSIDE BY 7 A.M.						1  CANADA DAY SITE CLOSED
2 WEEK B	3	4	5	6	7	8
9 WEEK A	10	11	12	13	14	15
16 WEEK B	17	18	19	20	21	22
23 WEEK A	24 WEEK B	25	26	27	28	29
30	31					

PROPANE TANKS

Propane tanks (any size) can create many safety hazards if they are not properly handled and disposed of.

NEVER throw your mini tanks in the garbage or blue bag. They could explode when being compacted on the collection trucks or if they are compacted by the landfill compactor. To dispose of any propane tank, take them to Kaizer Meadow.



ENVIRO-DEPOT™ - ADAMS BOTTLE EXCHANGE

Adams Bottle Exchange is located at 5960 Highway #3 in Gold River. This is what they can do for you...

1. **Accept electronics.** Adams Bottle Exchange is a drop-off for all acceptable electronic waste.
2. **Accept refundable beverage containers.** You get a 5¢ refund for all non-liquor beverage containers less than 5L; you also receive 5¢ for liquor beverage containers 500ml or less and 10¢ for liquor beverage containers greater than 500ml. Please remove all caps, rinse containers and do not crush. Containers include:
 - Aluminum beverage containers & steel beverage cans
 - Glass beverage bottles & liquor bottles
 - Paper juice cartons & tetra-paks
 - Plastic beverage containers

For details on these programs, contact Adams Bottle Exchange Ltd. at 902-212-0989.

NO DAIRY OR MEAL REPLACEMENT CONTAINERS (place in bag with other recyclables).

3. **Accept paint.** Below is a list of paint products you can and cannot bring. Containers must be tightly sealed and clearly labeled with their contents. Please do not return paint in glass containers or mix alkyd (oil-based) and latex (water-based) paints.

ACCEPTABLE PAINTS	NON-ACCEPTABLE PAINTS
Interior/exterior latex, alkyd, enamel & oil-based paints	Paints containing pesticides or wood preservatives that are registered under Pest Control Act (ie. Marine anti-fouling paint)
Porch, floor & deck paint	Craft paint (aerosols acceptable)
Interior & exterior varnishes & urethanes	Automotive paint (aerosols acceptable)
Marine enamels	Industrial or two-part paint
Wood finishing oils, stain & shellac	Roof patch
Latex driveway sealers	Brushes, rags & rollers
Rust paint, decorative metal paints	Paint in glass containers



ELECTRONICS RECYCLING



The Electronic Product Recycling Association (EPRA) allows for the recycling of the following electronics. Please call 1-877-462-8907 or visit www.recyclemyelectronics.ca/ns for more information.

- Televisions (TVs)
 - Computers (including laptops, notebooks)
 - Computer scanners
 - Computer monitors
 - Computer CPUs
 - Cables, mice, keyboards & other components
 - Telephones (cordless & corded)
 - Fax machines
 - Answering machines
 - Radios & clock radios
 - VCRs
 - DVD players
 - Stereos & amplifiers
 - Speakers
 - CD players
 - MP3 players
 - Digital cameras
 - Video cameras & camcorders
 - Car stereo systems
 - Home theaters in a box
- NEW!**
- Microwave ovens
 - E-readers
 - GPS units
 - Video Game Systems & controllers
 - External hard drives, optical drives & modems



The electronics listed on this page **WILL NOT** be collected at the curb, even as a bulky item.

The EPRA Drop-off in the Municipality of Chester is located at **ADAM'S BOTTLE EXCHANGE**, #5962 Highway #3, Gold River.



Cell phones can be recycled through the Recycle My Cell program. For locations or information about the program, visit www.recyclemycell.ca or call 1-888-797-1740.

August 2023

IMPORTANT INFORMATION REGARDING THE CIVIC HOLIDAY WASTE COLLECTION

This year, if your collection day falls on the **CIVIC HOLIDAY** (Aug. 7), please place your waste out for collection on **SATURDAY, AUGUST 5.**

**PLEASE CHECK THE CALENDAR
AND LOOK FOR THE ICONS TO
SEE WHEN YOUR COLLECTION
DAY WILL BE.**



ARE YOU STILL USING COMPOSTABLE BAGS?

If you are, **PLEASE STOP!** These plastic-like liners may be convenient, but they do not break down well and can get stuck in the grinding equipment at the composting facility causing operational issues and delays.

Instead, use a paper liner or no liner at all! For more information, see **PAGE 8.**



Questions? Call 902-275-2330

Sun	Mon	Tue	Wed	Thu	Fri	Sat
WEEK B		1	2	3	4	5 
						ALTERNATE COLLECTION
6	7 	8	9	10	11	12
WEEK A	CIVIC HOLIDAY NO COLLECTION SITE CLOSED					
13	14	15	16	17	18	19
WEEK B						
20	21	22	23	24	25	26
WEEK A						
27	28	29	30	31	SEE PAGES 16 —18 FOR YOUR COLLECTION DAY	
WEEK B						

DELIVERING WASTE TO KAIZER MEADOW

When delivering waste to Kaizer Meadow, it is important to remember to secure **ALL** loads. Unsecured loads of waste not only can cause an unsightly mess, it can also create a huge safety hazard.



Hurricane season has started. Are you prepared for 72 hours?

www.chester.ca/72-hours

YOUR STAY-IN-PLACE CHECKLIST

SUPPLIES LIST

In anticipation of an emergency, have enough supplies to stay in your home for a minimum of three days. In the winter, access to a secondary heat source may be necessary as well.

- ☐ 6L of water per person (2L per day)
- ☐ Food that won't spoil and a manual can opener
- ☐ First aid supplies
- ☐ Enough medications, such as for an allergy or a prescription
- ☐ List of your prescription medications with prescription number and purpose along with your pharmacy information
- ☐ Pet care
- ☐ Wind-up or battery-powered flashlight
- ☐ Wind-up or battery-powered radio
- ☐ Batteries
- ☐ Money
- ☐ Contact phone numbers for friends/family

In the event of an evacuation, you may want to consider taking

- ☐ Important documents, such as your drivers licence, insurance papers, health card, birth certificate, etc.
- ☐ Car keys and house keys

Before the storm, did you

- ☐ Get enough fuel (propane for a BBQ or stove, gasoline for a generator or car, etc.)?
- ☐ Secure any loose items outside, like patio furniture or toys (trampolines especially)?
- ☐ Fill the bathtub with water?
- ☐ Charge all of your battery-operated devices?
- ☐ Check on your neighbour? Maybe you can make a plan together.

COMFORT CENTRES & RELIEF

Comfort centres may open to support local residents. These centres provide a place to get warm, recharge devices, check on each other, and share information. Comfort Centres operate voluntarily and services offered may vary. Check with your Councillor (contact info on back page), our website and social media channels, or the radio to see if the Comfort Centre in your area is open.

Are you a "critical customer?" Nova Scotia Power offers a Critical Customer Communication program for customers whose health depends on electricity, such as those requiring oxygen machines or dialysis. Register with NSP to be added to their communication list. You, especially, need to prepare ahead of a potential power outage. Ensure you have sufficient medical supplies, extra batteries and an alternate power source.

EMERGENCY CONTACTS

Police/Fire/Ambulance911
 Non-emergency health advice811
 Provincial road concerns511
 (report a washout or obstruction)
 Non-emergency support211
 NS Power Outage Line 1-877-428-6004
 (report a downed line or power outage)
 Sewer concerns after hours.. 1-888-664-6998
 (report a back-up or pump station issue)

INFORMATION SOURCES

- Check www.chester.ca for local updates.
- www.GetPrepared.ca
- www.weatheroffice.gc.ca
- @RegionalEMO or @chestermun (Twitter)
- ChesterMunicipality on Facebook
- CKBW (98.1) or HANK FM (100.7)
- Your Councillor (contact information is at chester.ca or at the back of any municipal newsletter) because they will know a) if the area's comfort centre is open, b) any dangers (road washouts, etc) in the area.

If a state of local emergency is declared and evacuation is necessary, someone will come to your door.

September 2023

www.chester.ca

IMPORTANT INFORMATION REGARDING LABOUR DAY WASTE COLLECTION

This year, if your collection day falls on **LABOUR DAY** (Sept. 4), please place your waste out for collection on **SATURDAY, SEPTEMBER 2.**

**PLEASE CHECK THE
CALENDAR AND LOOK
FOR THE ICONS TO SEE
WHEN YOUR COLLECTION
DAY WILL BE.**



PLACEMENT OF WASTE AT THE CURB

Did you know that **ALL** waste must be within **10 feet** of the curb or it will not be collected? This includes any waste collection boxes.



DID YOU KNOW...

Waste collection trucks travel and collect from one side of the road and then the other? The collector is **NOT** permitted to cross the street to collect waste.



Sun	Mon	Tue	Wed	Thu	Fri	Sat
WEEK B					1	2  ALTERNATE COLLECTION
3 WEEK A	4  LABOUR DAY NO COLLECTION SITE CLOSED	5	6	7	8	9
10 WEEK B	11	12	13	14	15	16
17 WEEK A	18	19	20	21	22	23
24 WEEK B	25	26	27	28	29	30 National Day for Truth & Reconciliation Site Open

PAPER LINERS - THE BEST OPTION

When bagging up leaves and yard waste, the use of paper bags is always the best option. Paper bags are also preferred if you use bags for your food waste. They break down and decompose quickly and paper bags tend not to get stuck in the processing grinder like the compostable bags do. If you use compostable bags, please switch to a paper alternative. See **PAGE 8** for more details.



#FACTS

LANDFILL FIRES:

DANGEROUS & COSTLY BUT NOT UNCOMMON



Unfortunately, fires in the landfill are not uncommon. These situations are very costly, pose huge safety issues and concerns resulting in site closures which are very inconvenient to our residents and waste haulers.

Many factors can contribute to the cause of a fire and sometimes, the cause is unclear and hard to pin-point. We have had quite a number of fires at Kaizer Meadow, most of which are caught early by staff and can be extinguished quickly. Others are much too big and dangerous and require the help of fire fighting professionals. With these larger fires, multiple departments are called on site to assist. It can take hours to fully extinguish these fires.

Some of the more common “fire starters” can be found in your home:

- Household batteries
- Propane tanks
- Aerosol cans
- Hazardous waste & chemicals (which cause reactions)
- Flares & ammunition (drop off at RCMP Detachment)

Most of these items can be dropped off at Kaizer Meadow for proper disposal/recycling! **NEVER** throw these items in the garbage.



#FACTS

BATTERIES CAN CAUSE LANDFILL FIRES

Recycle alkaline and lithium batteries at

Kaizer Meadow Landfill
Municipal Office
Adam's Bottle Exchange

902-275-2330 | phone
solidwaste@chester.ca | email
www.chester.ca/waste-recycling

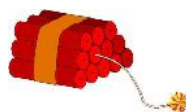


October 2023

FAQs

CAN I PUT OLD FLARES AND AMMO IN THE GARBAGE?

Flares, explosives and ammunition can create a **HUGE** safety hazard when not disposed of correctly! These items **NEVER** belong in the garbage, blue bag, green cart or even at the Household Hazardous Waste depot at Kaizer Meadow. These items must be taken directly to your local RCMP office.



WHEN CAN I PUT MY WASTE OUT?

All waste **MUST** be curbside prior to 7 A.M. on your scheduled collection day. Waste may also be placed at the curb for collection **NOT EARLIER** than dusk of the day **PRIOR** to collection, as outlined in the Waste Collection & Disposal By-Law. The owner of the property is responsible for the waste until it is collected.

WHAT DO I DO WITH MY EMPTY AEROSOL CANS?

Empty aerosol cans are recyclable and can be taken to either Kaizer Meadow or Adams Bottle Exchange in Gold River. These cans pose a safety issue and **CANNOT** be placed at the curb for collection.



Questions? Call 902-275-2330

Sun	Mon	Tue	Wed	Thu	Fri	Sat
1 WEEK A	2	3	4	5	6	7
8 WEEK B	9  Thanksgiving Site open Collection as usual	10	11	12	13	14
15 WEEK A	16	17	18	19	20	21
22 WEEK B	23	24	25	26	27	28
29 WEEK A	30	31 	HAVE WASTE CURBSIDE BY 7 A.M.			

CAN I USE THE COMPOSTABLE "PLASTIC-LIKE" BAGS IN MY GREEN CART?

In an effort to improve the composting process, we would like residents to stop using compostable bags and switch to a paper-based option (bags, boxboard, newspaper, etc.), effective immediately. Alternatively, do not use any liners at all. In addition, we would like you to place any hot/cold drink cups into the garbage instead of the green cart. For more information, see **PAGE 8**.



ILLEGAL DUMPING: IT'S EVERYBODY'S BUSINESS!

Did you know that there have been dozens and dozens of illegal dumps reported in our Municipality alone? Dumping creates an unsightly and dangerous mess! What are people dumping? Well, usually it is construction and demolition waste (shingles, wood, drywall, etc.), loose waste and rejected and unsorted waste. Also at many dump sites, hazardous waste is found which is harmful to not only the environment but it is also harmful to wildlife and to residents who may have a drinking well nearby.



Did you also know that dumping in commercial dumpsters, Municipal waste collection areas, and even in your neighbour's garbage box is also considered illegal dumping? The Municipality has many waste collection sites for roads that do not have access to curbside collection. These collection sites are meant **FOR THE RESIDENTS WHO LIVE ON THAT ROAD ONLY**. These sites are **NOT** meant for dumping rejected garbage, construction waste or hazardous waste. No matter where it is, **ILLEGAL DUMPING is ILLEGAL!**

The good news? Most of the offenders are identified!

If you see or know someone who is illegally dumping waste, please report it by calling Kaizer Meadow at 902-275-2330.

LET'S KEEP OUR ENVIRONMENT CLEAN!



November 2023

www.chester.ca

DON'T FORGET!
LEAF & YARD WASTE WILL BE COLLECTED THIS MONTH



LEAVES IN CLEAR, PLASTIC BAGS WILL BE COLLECTED FROM NOVEMBER 13 - 24 ON YOUR REGULAR SCHEDULED DAY.

Special leaf collection is the only time that **CLEAR, PLASTIC** bags can be used to bag leaves. It is also the only time that an **UNLIMITED** amount of bagged leaves will be collected.

During regular collection, yard waste (leaves, grass clippings, garden trimmings, etc.) can go in your green cart. If your green cart is full, you can put **UP TO THREE PAPER BAGS** alongside your green cart each collection. Paper bags are always the preferred option.

DO NOT put branches in a bag. Please tie them in 3' long bundles and place them in the green cart and **ONLY IF THEY DO NOT EXCEED 2" IN DIAMETER OR STICK OUT OF THE TOP OF THE CART.**



Sun	Mon	Tue	Wed	Thu	Fri	Sat
WEEK A	SEE PAGES 16 —18 FOR YOUR COLLECTION DAY		1	2	3	4
5 WEEK B 	6	7	8	9	10	11 REMEMBRANCE DAY SITE CLOSED
12 WEEK A	13 	14	15	16	17	18
19 WEEK B	20 	21	22	23	24	25
26 WEEK A	27	28	29	30		

IMPORTANT INFORMATION REGARDING REMEMBRANCE DAY AT KAIZER MEADOW

Kaizer Meadow will be closed on **REMEMBRANCE DAY.**



??

DEAR SHABBY?

Questions about all things waste-related? No problem! Email "Dear Shabby" at **solidwaste@chester.ca** to have **ALL** of your questions answered!

HOUSEHOLD HAZARDOUS WASTE (HHW)

The Household Hazardous Waste Depot is located at Kaizer Meadow Environmental Management Centre. It is open to all residents of the Municipality of Chester during regular landfill hours (see page 32).

Many products we use are hazardous and should not be thrown in the garbage. Here are a few things to keep in mind;

- Ensure that the materials being delivered to the HHW site are in their original container or a labeled container so that they can be easily identified. The containers should be in good condition and not leak.
- **If in doubt, find out!** Not sure if your material is hazardous? Call Kaizer Meadow to find out.

ACCEPTABLE ITEMS

Paint
Cleaners & Degreasers
Fertilizers
Bleaches
Expandable foams (pressurized)
Wood preservatives
Fluorescent lights, including CFLs
Solvents, varnishes, stains & thinners
Used oils & transmission fluids
Batteries
Empty and full aerosol containers
Fire extinguishers
Herbicides & pesticides



UNACCEPTABLE ITEMS

Business, industrial & institution waste
Bio-medical waste
Excessive amounts of material
PCBs, radioactives & explosives
Asbestos
Unidentified material
Compressed gas cylinders (oxygen, helium, acetylene, etc.)
Flares (take directly to local RCMP office)
Ammunition (take directly to local RCMP office)



- ⇒ When dropping off waste oil or gas, please make sure that these items are in a container that you do not wish to keep.
- ⇒ Please keep rechargeable batteries separate from alkaline batteries.
- ⇒ Empty aerosol cans can no longer be placed in the blue bag for recycling. Empty or full, they are hazardous. Please drop them off with other items at the HHW Depot.
- ⇒ Empty paint cans ARE NOT hazardous, however, under new program regulations, they need to be dropped off at the HHW Depot.



PROGRAM CHANGES FOR PAINT CANS

In early 2018, a new Paint Program Stewardship Plan was approved for the NS Paint Stewardship Program. Under the new plan, the program will now accept empty program paint cans, including aerosol paint cans. With that said, we are asking residents to no longer place empty cans in the garbage; empty cans should now be taken directly to Kaizer Meadow or dropped off at Adam's Bottle Exchange in Gold River.



INFORMATION ON HOUSEHOLD BATTERIES

Please note that there are battery collection tubes available at the Municipal Office (151 King Street) in Chester. These tubes are for **REGULAR HOUSEHOLD BATTERIES ONLY**. Any other batteries can be taken directly to Kaizer Meadow for disposal.

There is also a box to drop off old cell phones. Questions? Call 902-275-2330.



December 2023

IMPORTANT INFORMATION REGARDING CHRISTMAS DAY, BOXING DAY & NEW YEAR'S DAY 2024 WASTE COLLECTION

This year, if your collection day falls on **CHRISTMAS DAY** (Dec. 25), please place your waste out for collection on **SATURDAY, DECEMBER 23.**

If your collection day falls on **BOXING DAY** (Dec. 26), please place your waste out and it will be **COLLECTED AS USUAL.**

If your collection day falls on **NEW YEAR'S DAY 2024** (Jan. 1), please place your waste out on **SATURDAY, DECEMBER 30.**

**PLEASE CHECK THE
CALENDAR AND LOOK FOR
THE ICONS TO SEE WHEN
YOUR COLLECTION
WILL BE.**



TAKING DOWN THE CHRISTMAS TREE?

No problem! Place it out on your next waste collection day and it will be collected as your bulky item!

Questions? Call 902-275-2330

Sun	Mon	Tue	Wed	Thu	Fri	Sat
WEEK A					1	2
HAVE WASTE CURBSIDE FOR 7 A.M.						
3	4	5	6	7	8	9
WEEK B						
10	11	12	13	14	15	16
WEEK A						
17	18	19	20	21	22	23
WEEK B						
24	25	26	27	28	29	30
WEEK A	31	CHRISTMAS DAY NO COLLECTION SITE CLOSED				ALTERNATE COLLECTION
WEEK B		BOXING DAY SITE CLOSED COLLECTION AS USUAL				ALTERNATE COLLECTION FOR NEW YEAR'S DAY 2024



GOT SOME BROKEN BULBS OR BROKEN GLASS?

No problem! Place broken glass in a box, seal it up and label it **"BROKEN GLASS"**. Place **ALONG SIDE** your regular garbage on collection day!



The Municipality
of Chester would
like to wish
everyone a very
happy
holiday season!

ALTERNATIVE DROP-OFF SITES

Sometimes, residents will have an item that cannot be placed in the garbage or recyclables bag, such as a mini propane tank or an aerosol can. What can they do with that one item? Well, those items can always be dropped off at Kaizer Meadow, but sometimes that just isn't convenient. So, in an effort to make it a little more convenient, alternative drop-off sites are available to residents. Here are some items that cannot be collected curbside and their alternative drop off:

	Kaizer Meadow	Adam's Bottle Exchange	Hubbards Hardware	New Ross Home Hardware	Municipal Office
Aerosol cans (empty or full)	✓	✓			
Used oil & gasoline	✓				
Computer components & other Electronic waste	✓	✓			
Fluorescent lights & CFLs	✓	✓	✓	✓	
Herbicides & pesticides	✓				
Old cell phones	✓				✓
Household batteries	✓	✓	✓	✓	✓
Mini propane tanks	✓				
Half-full & empty paint cans	✓	✓			
Lead-acid batteries (automotive)	✓				

THERE'S AN APP FOR THAT!

R6RECYCLES

Questions about your waste collection schedule or what goes where? Download the **R6RECYCLES** app!

Or, go to www.chester.ca/r6recycles and get all the information the app offers.



GARBAGE? RECYCLABLE? COMPOSTABLE?

Confused about a few items that may (or may not be) in our sorting guide? Below are a few items that we get the most questions about.

ASHES

COOLED ashes can go into the green cart. It takes at least 3 weeks to completely cool them. Also be sure to douse the ashes with water once in your cart to avoid any dust getting into the collector's eyes when dumping the cart.



LED (LIGHT-EMITTING DIODE) LIGHTS & INCANDESCENT LIGHTS

LED lights, the kind that are more energy efficient than regular (incandescent) bulbs, and incandescent bulbs are garbage. To avoid breakage, you can place them into a cardboard box, label "**GLASS**" and put next to your other materials.

FROZEN JUICE CANS

Frozen juice cans—the kind made with tin lids and bottoms and cardboard in the middle - are **GARBAGE**. They are made of mixed materials and cannot be recycled.



HOT & COLD PAPER DRINK CUPS

Operational changes have made us change our messaging regarding the paper cup. Going forward, we ask that you place **ALL** paper drink cups into the garbage. This includes paper cups from Tim Hortons, McDonalds, Subway®, etc. For details on why our message has changed, see **PAGE 8**.

KEURIG® CUPS (K-CUPS)

These can be tricky. Unless you want to separate the components (remove lid and empty grinds), these cups are garbage because it is made of mixed materials. If you want to reduce waste, remove the lid and place it in the garbage; the grinds can be placed in to your green cart and the plastic cup can be rinsed and recycled!



STYROFOAM™

All Styrofoam™, regardless whether it has a recycling symbol on it or not, is **NOT** recyclable in our Municipality and should be placed in a clear bag with other garbage. This includes all Styrofoam™ cups, trays, packaging and containers.

FRYER GREASE / OIL

Cooled fryer grease/oil can go into your green cart. To avoid the oil leaking onto the ground, line your cart with leaves, paper towels or newspapers to absorb the liquid.



KITTY LITTER & DOG WASTE

ALL pet waste and litter is garbage. If you use a grocery bag for cleaning up after Fido, just toss the bag into a clear or black bag. The contents do not have to be emptied into the bag.

DOG FOOD & CAT FOOD BAGS

MOST of these items are made up of two or more materials (mixed) and cannot be recycled. Doing a simple tear test will tell you if the bag contains a plastic liner or not. Just rip the bag to see if there is a plastic film or liner where the tear ends. If there is, this means that the bag contains mixed materials and it belongs in the garbage.



ICE CREAM CONTAINERS

Ice cream containers - the kind that are made of a waxy cardboard material - are **GARBAGE**. Like the paper cup, we need to place these in the garbage due to operational changes at the composting facility (**SEE PAGE 8**).



KaizerMeadow

Environmental Management Centre

Municipality of the District of Chester

Solid Waste Services

450 Kaizer Meadow Road (Route 14, approx. 17 km north from Exit 8, Hwy. #103)

P O Box 369

Chester NS B0J 1J0

www.chester.ca

Phone 902-275-2330

Fax 902-275-1468

Email solidwaste@chester.ca

HOURS OF OPERATION:

Mon. to Sat. - 8:00 A.M. - 4:00 P.M.

Municipality of the District of Chester

Public Works Services

151 King Street

P O Box 369

Chester NS B0J 1J0

www.chester.ca

Phone 902-275-1312

Fax 902-275-3630

Email publicworks@chester.ca

HOURS OF OPERATION:

Mon. to Fri. - 8:30 A.M. - 4:30 P.M.

This calendar was sponsored by:

Municipality of the District of Chester



THE MUNICIPALITY OF
CHESTER